



assembly instruction

**EuroCarry bike rack Nuevo
for motorhomes**



Item number: 30352

Document no.: 30352-0621

Date: 08.06.2021

foreword

The EuroCarry NUEVO is a carrier for mounting above the rear window of a motorhome. It is particularly suitable for motorhomes with large or continuous rear windows. Due to the telescopic tubes, it is variably adjustable in height from 80 cm – 155 cm

important!

- **Mounting of the carrier is only allowed on load-bearing elements of the rear wall!**
- Read the assembly instructions carefully before first use.
- Before assembly, make sure that the product is compatible with the vehicle on which it is to be mounted.
- We recommend that the assembly be carried out by specialist personnel, taking into account the regulations currently in force.
- Perform assembly according to this template.
- The carrier must be firmly mounted on the vehicle before loading.
- After assembly, check all (including the pre-assembled) screw connections again for their strength! Repeat this procedure again after 50 km of driving distance at the latest!
- Please keep assembly instructions carefully.

1. Scope of delivery:

1. Holder (2 pieces)
2. Base plates (2 pieces)
3. Rubber (2 pieces)
4. Angle bar
5. U-disc Ø 6,4 DIN 125 (14 pieces)
6. Stop nut M 6 (10 pieces)
7. Hex screw 6 x 50 DIN 931 VA (2 pieces)
8. Hexagonal screw 6 x 55 DIN 931 VA (2 pieces)
9. Lock screw 6 x 60 DIN 603 VA (4 pieces)
10. Lock screw 6 x 50 DIN 603 VA (2 pieces)
11. Plastic T-connector (2 pieces)
12. Rail carrier (2 pieces)
13. Straps (5 pieces)
14. Basic frame parts aluminum (4 pieces)
15. Spacer (2 pieces)
16. Wood screws (3 pieces)

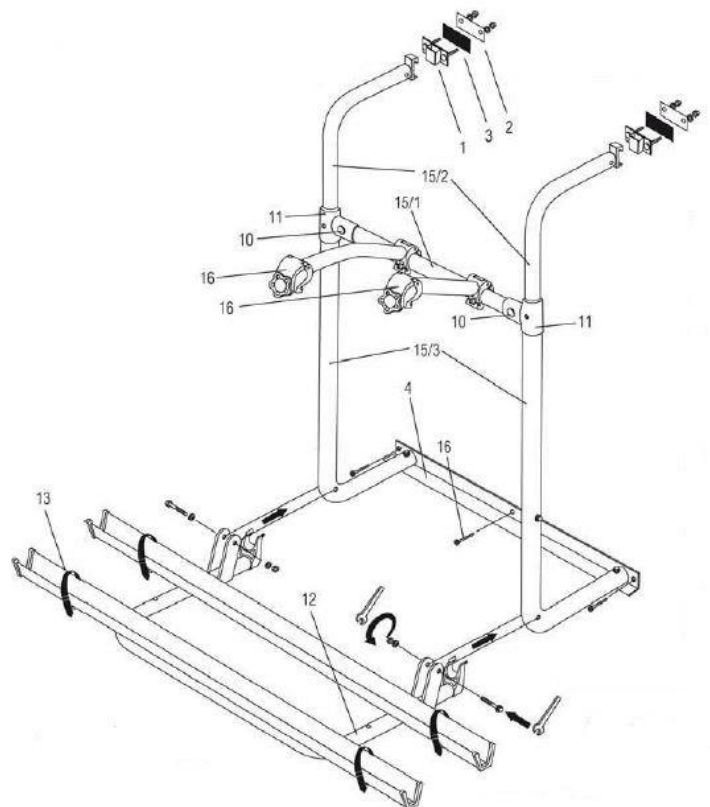


2. Technical data:

- Own weight of the bicycle carrier: approx. 14.0 kg
- Maximum payload: 60 kg

3. Pre-assembly:

Put the base frame (15/3) and base frame (15/1) together with the T-connectors (11) and screw them with 2 lock screws (10) M 6 x 45 and 2 U-discs. Connect angle bar (4) with base frame (15/3) with M 6 x 45. Screw rail carrier (12) with basic frame (15/3). Tighten screws only so tightly that the rail carrier can still be folded up (approx. 2-3 Nm). Attach spacers (15) to the base frame (15/1).



4. Installation on the vehicle:

Position carrier with mounted brackets (1) to mark the holes at the rear. Align the carrier with the vehicle in a horizontal position (Fig. a). Mark the drilling points of the brackets and drill holes \varnothing 6.5 mm through the vehicle back wall (Fig.b).

Clean assembly areas of the vehicle.

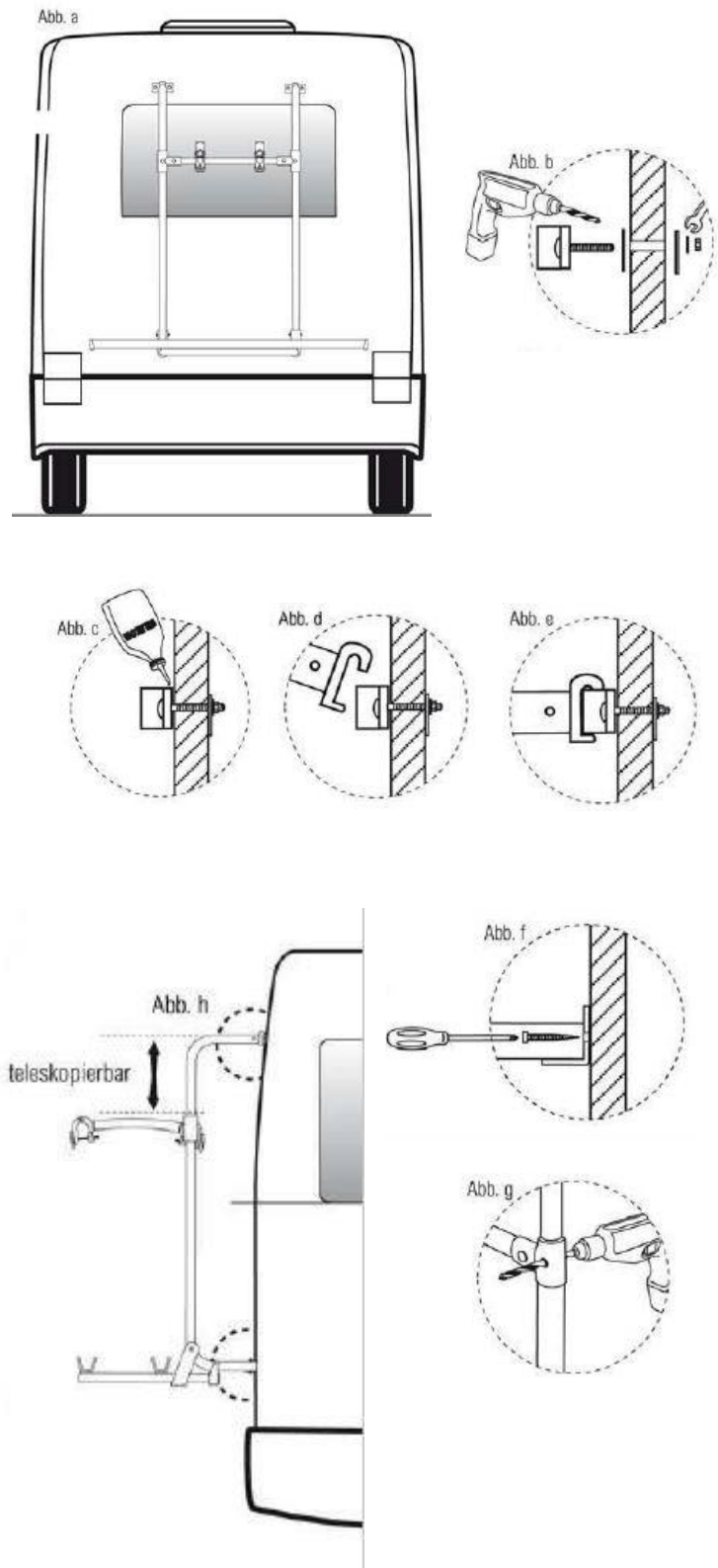
To seal your vehicle, cover the foam rubber seal (3) on the side of the vehicle wall and the boreholes with a sealant, e.B. silicone (Fig.c).

Now the brackets with lock screws M 6 x 60, washers and nuts can be screwed against the base plates (2) on the vehicle interior wall. The EuroCarry Nuevo is now mounted in the brackets (Fig. d + e).

The basic frame tubes (15/2) can be telescoped. Bring the carrier to the optimum height for the vehicle (Fig. h) and attach the angle strip (4) with the wood screws to the vehicle (Fig. f).

important:

Now the basic frame (15/3) must be firmly screwed to the basic frame (15/2). For this purpose, holes \varnothing 6.5 mm are punched on the plastic T-connector (11) which must be drilled through with a drilling machine (Fig. g) and screwed with the lock screws M 6 x 45, washers and nuts.



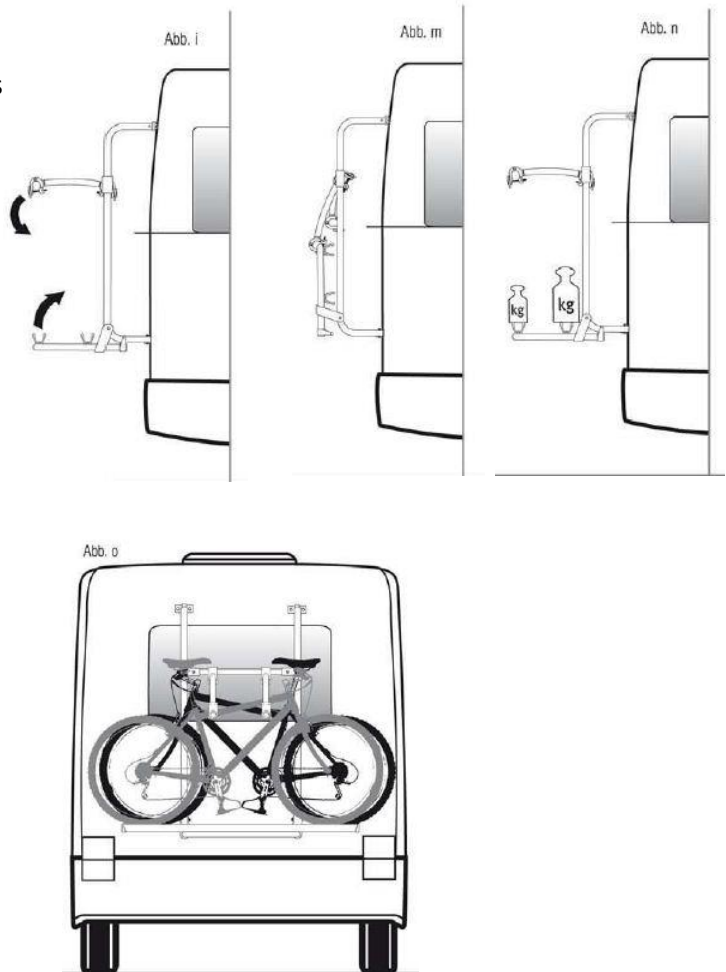
The EuroCarry can be folded compactly when unloaded (Fig.m). For this purpose, the rail carrier can be folded up and secured with straps (13) (Fig. i).

Place the bicycles for transport with the tires in the V-shaped bicycle rail. When positioning the first bicycle (next to the vehicle) check the position of the steering and pedaling, the necessary free space to the vehicle back wall must be observed in order to avoid paint damage. The second (and third bicycle) is always arranged reciprocally (Fig. o).

By rotating the holding claws, the spacers can be optimally adapted to the bicycle frame. In addition to the holding claws, the bicycles are to be connected with the included strap with the basic frame of the bicycle carrier and thereby secure.

Tie the front and rear wheel with straps in the V-rail.

When loading the bicycles, pay attention to the weight distribution. The heaviest bicycle is closest to the back of the vehicle (Fig. n).



5. General instructions for use and safety:

1. The attachment of the EuroCarry must be checked regularly by the driver.
2. The transported goods must not protrude significantly beyond the edge of the vehicle on the right and left. Permissible according to the StVO: Distance from the outer point of the transported goods to the middle of the taillight not more than 40 cm. Vehicles with cargo must not be wider than 2.5 m. Responsible for carrier and load is according to StVO (§§ 22, 23) the driver.
3. Due to the load attached to the rear of the vehicle, the axle load distribution specified by the vehicle manufacturer is changed. This change must not lead to an exceedance of the permissible axle loads.

4. Bicycles are not to be protected with tarpaulins and covers during transport. Adjustable parts or the like must be removed and the front wheels fixed with belts.
5. In the case of even partial concealment of lighting equipment and/or the registration plate by the EuroCarry, or the cargo carried, the corresponding devices shall be repeated.
6. The simultaneous operation of a trailer and a rear carrier is not permitted.
7. Attachment to plastic bumpers and other inadequate points is inadmissible. Suitable fastening points must be checked beforehand.
8. For safety, the screw connections and the belts must be checked for damage, a firm hold and a proper fit before driving (replace defective belts immediately). Stop after a short drive and check screw connections and lashing belts for perfect fit. These checks shall be repeated at regular intervals, also depending on the nature of the roadway.
9. The handling changes with mounted and loaded rear carrier. This applies in particular to crosswind sensitivity, cornering and braking behaviour.
10. An additional right wing mirror is required.
11. In addition, the changed driving and braking behavior caused by rear load and load should be taken into account by adapted speed.
12. For reasons of safety towards other road users and to avoid unnecessary energy consumption, the rear carrier must be taken off the vehicle when not in use.
13. For vehicles with rear window wipers, it should be noted that the function may be impaired (exclude use, possible disassembly of the wiper arm).
14. Attachments, rear spoilers and externally mounted spare wheels can make assembly impossible.
15. In some types of bicycles, the bicycle handlebar must be turned and attention paid to the pedal position (paint damage).
16. Be careful with driveways and garage entrances.

6. Warranty:

- For the EuroCarry, the company Alu-Line takes over the warranty according to current legal regulations as far as it concerns factory defects.
- In case of complaint, a copy of the assembly instructions and the proof of purchase must be ensued.
- The objected part must be made available to the manufacturer free of charge for testing on request.
- We are not liable for incorrect construction or misuse. Subject to change at any time.
- Changes to our parts or specifications as well as misuse are outside our responsibility.

Notes: